



CAD PROJEKT K&A

operation manual

# CAD Share-it

a mobile application for sharing projects on-line





# Table of content

- 1. Introductory remarks..... 5**
  - 1.1. About the app ..... 5
  - 1.2. Two kinds of user accounts..... 5
  - 1.3. Download the app..... 6
  - 1.4. Install CAD Share-it ..... 6
  - 1.5. Launch the app ..... 7
- 2. System and hardware requirements ..... 7**
- 4. Getting started (version for PCs) ..... 7**
- 5. Open 3DE files..... 9**
  - 5.1. Basic information about 3DE files ..... 9
  - 5.2. ‘Open file...’ option ..... 9
- 6. Import 3DE files and create galleries..... 10**
- 7. Manage galleries..... 11**
- 8. Manage designs ..... 11**
  - 8.1. Publish designs..... 12
  - 8.2. Manage designs on the server ..... 13
    - 8.2.1. Generate QR codes ..... 13
    - 8.2.2. Send designs by e-mail..... 14
- 9. Send a gallery by e-mail ..... 14**
- 10. Manage associations..... 16**
- 11. Display statistics..... 17**
- 12. Set design preview..... 20**
- 13. Manage accounts ..... 21**
- 14. Other functions ..... 22**
  - 14.1. Gallery or design preview in a browser ..... 22
  - 14.2. Displaying information about limits ..... 22
  - 14.3. Access to manual ..... 23
  - 14.4. Minimize, maximize and close the app ..... 23





## 1. Introductory remarks

### 1.1. About the app

CAD Share-it is a mobile system for interior designers and their customers. It enables sharing realistic 3D visualizations of interiors designed with our other software between PCs, tablets and smartphones, so the results of designers' work can be viewed by customers everywhere and at any moment. The CAD Share-it system enables:

- managing 3D visualizations saved as 3DE files, grouping them into galleries, providing them with your own logo and a link to a website or an e-mail address;
- sending designs to any number of recipients via e-mail, publishing them on your homepage, creating a QR code for printing out (e.g. on a poster), or even sending a link to a design via text messaging;
- receiving and displaying designs on PCs (in a browser) and mobile devices (with an Android or iOS app).

**Version for designers (CAD Share-it Publisher for PCs)** allows publishing 3D designs on the server by users of CAD Decor PRO, CAD Decor 2.3, CAD Kitchen MAX 6.3, and CAD Kitchen 6.3 with Export 3D Module.

**Version for customers (app CAD Share-it for mobile devices)** allows anyone with a smartphone or tablet with Android or iOS to view published 3D designs, and is available to free download from Google Play and Apple Store on-line stores.

### 1.2. Two kinds of user accounts

CAD Share-it is available in two versions:

- **the BASIC - free for all users** of CAD Decor PRO, CAD Decor 2.3, CAD Kitchens 6.3 (with **account** 'Export 3D') and CAD Kitchens MAX 6.3. who own an active Service Package,
  - the 'Export 3D' module for creating 3DE files is necessary.
- **the PRO - free for CAD Decor PRO users**, it can be purchased by users of CAD Decor 2.3., CAD Kitchens with the 'Export 3D' module and CAD Kitchens MAX 6.3,
  - to upgrade to the PRO version please contact our Sales Department.

Differences between the BASIC and PRO accounts:

	BASIC version	PRO version
<b>price</b>	free, necessary valid Service Package	free for users of CAD Decor PRO with active Service Package; for the users of other software: according to the price-list
<b>launch</b>	active Service Package	active Publisher PRO Package
<b>disk space *</b>	100 MB	1 GB
<b>monthly upload quota **</b>	no limits	no limits
<b>monthly download quota ***</b>	200	2000
<b>number of galleries</b>	one	many
<b>your own logo</b>	-	yes
<b>design download statistics</b>	-	yes

\* total server space for designs of a single user,

\*\* number of designs (in MBs) that you can publish, i.e. upload to the server in a month,

\*\*\* 1 download = 1 access to a design via e-mail, a link or a QR code (also called 'display').

### 1.3. Download the app

An Android version of the CAD Share-it app can be downloaded from the Google Play service, and an iOS version is available from the Apple Store. These versions of CAD Share-it can be used by every owner of any mobile device - completely for free!

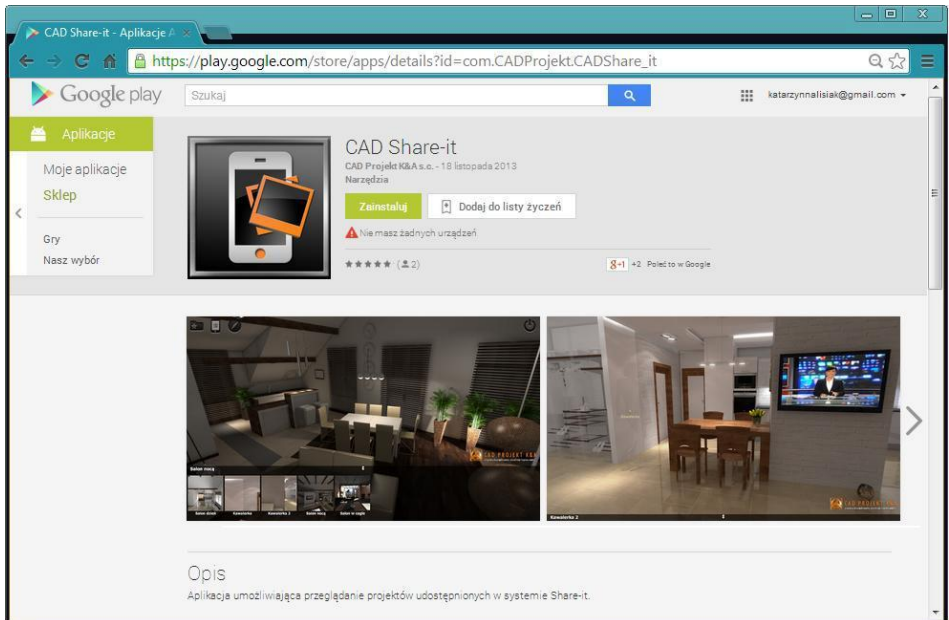



Fig. 1 – Google play Internet store

Users of CAD Projekt's software receive CAD Share-it Publisher, enabling to publish designs on-line, in our program installers - on DVDs when purchasing software or via iUpdate after consequent updates.

### 1.4. Install CAD Share-it

In order to install CAD Share-it on mobile devices, download it from an internet store and follow the user's manual of the device in question.

The CAD Share-it app is installed automatically on desktop and laptop computers as part of the installation of CAD Decor, CAD Kitchens and CAD Decor PRO. As soon as the CAD Share-it app had been published, the required files were added to the installers of our CAD software.


After the installation, a new button  **'Publish in CAD Share-it'** appears in visualization of our CAD programs, which launches the app.



## 1.5. Launch the app

The app can be launched on a PC in 2 ways: by clicking the **‘Publish in CAD Share-it’** icon in the upper toolbar in the visualization mode while working in CAD Decor PRO, CAD Decor or CAD Kitchens (with Export 3D), as well as independently, by launching the **CAD\_Share\_it.exe** file, to be found in the main folder of one of the above-mentioned programs. This version can publish designs on the server and send them by e-mail.



On all other devices, the app is launched by clicking the  icon. These versions enable looking through galleries of the Share-it system users in internet browsers and in Android and iOS, as well as sending them via e-mail.


## 2. System and hardware requirements

The requirements of the CAD Share-it app are not different from those of our other software, except that it works on various operating systems depending on the device used, and that it requires an active Internet connection to operate.

<b>System requirements</b>	<ul style="list-style-type: none"> <li>operating system for laptop and desktop computers: Windows 10 (with Service Pack – 32-bit, Vista – 32/64-bit, Windows 7 or 8: 32/64-bit;</li> </ul>
	<ul style="list-style-type: none"> <li>operating systems for tablets, smartphones and mobile phones</li> </ul>
<b>Minimal hardware requirements</b>	<ul style="list-style-type: none"> <li>internet connection;</li> <li>processor: single-core 2,0 GHz;</li> <li>RAM: Windows XP: 2 GB; Windows Vista/7/8: 4 GB;</li> <li>video card: Nvidia GeForce 8600 GT (512 RAM) or higher (cards supporting OpenGL 3.0 and GLSL 1.3 or higher);</li> </ul>
	<ul style="list-style-type: none"> <li>internet connection;</li> <li>processor: dual-core (or multi-core) 2,6 GHz;</li> <li>RAM: 4 GB;</li> <li>video card: Nvidia GeForce 8600 GT (memory: 768 MB or more);</li> </ul>
<b>Recommended hardware requirements</b>	<ul style="list-style-type: none"> <li>internet connection;</li> <li>processor: dual-core (or multi-core) 2,6 GHz;</li> <li>RAM: 4 GB;</li> <li>video card: Nvidia GeForce 8600 GT (memory: 768 MB or more);</li> </ul>

You can find more information on the system and hardware requirements of our software in the **‘Designers zone’** of our website, in the bottom of the **‘Support’** section: <https://www.en.cadprojekt.com.pl/system-and-hardware-requirements>

## 4. Getting started (version for PCs)

After the CAD Share-it Publisher app has been started, the following start screen appears, together with the account choice window (Fig. 1). To choose an account, expand the list by clicking on the arrow .

The account choice window additionally displays the number of days remaining until your subscription expires, and when this number is lower than 30, it is displayed in red. In this case, please contact our Sales Department in order to renew your Service Package or Publisher PRO Package.

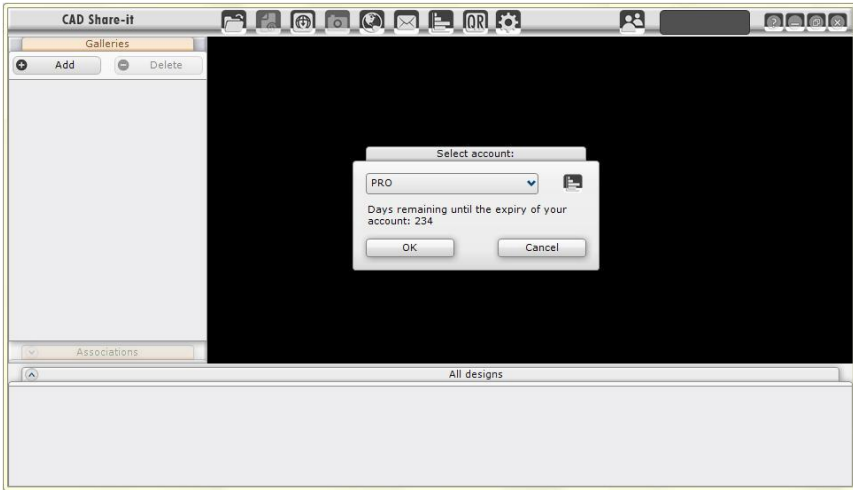


Fig. 1 – start screen of the CAD Share-it app with the account choice window

*Note! CAD Share-it in version for computers and laptops operates only with programs with valid Service Packages. All users of our CAD programs with valid Service Package receive free access to the BASIC account. In addition to that, owners of CAD Decor PRO with valid Service Package are entitled to free access to the PRO account.*

*Note! Users of CAD Decor and CAD Kitchens, to be able to use the PRO account too, have to purchase the Publisher PRO Package. It can be purchased only until the expiry date of the Service Package. For example, if at the moment of purchasing the Publisher PRO Package the expiry date of the Service Package is in 6 months, then the Publisher PRO Package can be purchased only for 6 months. And then, when with the renewal of the Service Package, you can prolong the Publisher PRO Package as well.*

*Note! BASIC and PRO accounts are separate and independent, so clients owning the PRO account have in fact 440 MB disk space for their designs (40 MB from the BASIC account and 400 MB from the PRO account). It also means that galleries generated in the BASIC account are unavailable in the PRO account. If you sent a gallery to clients from the BASIC account, then after using the entire monthly quota of views, you can keep publishing it after generating the same gallery in the PRO account.*

*Note! You will be informed about the addition or expiration of an account with a message appearing after the app has been launched (Fig. 4).*

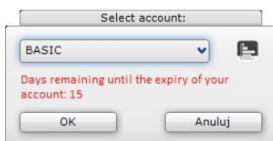


Fig. 2 – number of days until the BASIC account expires

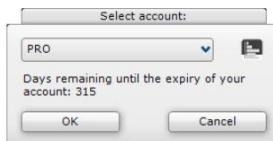


Fig. 3 – number of days until the PRO account expires

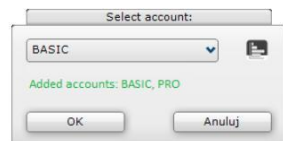


Fig. 4 – notification about the addition of accounts



The main functions of the app are available from the icon bar in the upper part of the screen. Its appearance changes after a gallery has been chosen (by left double-clicking). It is presented below, with a description of icons differing in appearance. The currently selected icon turns orange. Icons which are active but are not currently selected are black and white. Functions which are currently unavailable are grayed out.



Fig. 5 – the icon bar right after a BASIC account has been launched




Fig. 6 – the icon bar after a gallery in a PRO account has been selected

## 5. Open 3DE files

### 5.1. Basic information about 3DE files

3DE files are created when you prepare visualizations in our CAD software. They are simple 3D animations, in which the camera, which you can place anywhere within the design, rotates and presents the interior around it.

They are created with the Export 3D module, which is available under the  **'Export 3D scenes'** icon. This module is an integral part of CAD Decor and CAD Decor PRO, but in CAD Kitchens it has to be purchased separately.

The description of how to create 3D animations can be found in user's manuals, available in the installation folders, as well as from our website in the **'Designers zone'** of our website: <https://www.en.cadprojekt.com.pl/program-manuals/> in a chapter called 'Presentation of a project - creating illustrations, animations and videos'.

### 5.2. 'Open file...' option

In CAD Share-it, 3DE files can be either displayed (in which case they are not saved) or published (in which case they are saved in an existing or newly created gallery). To choose between the two possibilities, select the icon presented below, and, having selected the file, choose either **'Publish'** or **'Display'** (Fig. 8).



- **'Open .3de file'** - it is the first option in the main menu. It opens the **'Opening'** window (Fig. 7), in which you can select the animation file. Next, you have to decide what to do with the file - if it should be published on the server, and so saved in a selected gallery (choose: **'Publish'**) (Fig. 8), or only displayed (choose: **'Display'**). If you choose the **'Publish'** option, an upload progress bar will appear (Fig. 9).

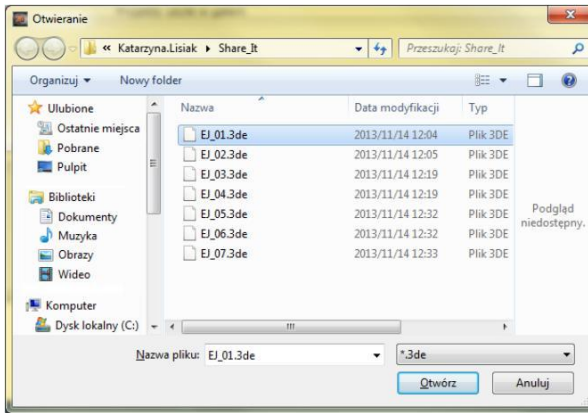


Fig. 7 – window: opening visualization files (3DE)

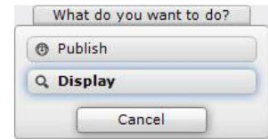


Fig. 8 – 'What do you want to do' window

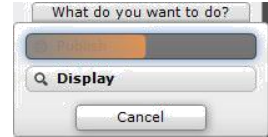


Fig. 9 – upload progress bar

## 6. Import 3DE files and create galleries

To create a gallery of designs, you first have to load 3DE animation files. To do so, you might use the **'Open .3de file'** icon described above and the **'Publish'** function, or - to make the process quicker – you can use the import option, described below.



- **'Import designs'** - opens the **'Select designs for importing'** window (Fig. 9), in which you can select any number of 3DE files. If you are working in a PRO account, after clicking **'Open'** a window will appear asking whether a gallery should be created for the imported files (Fig. 11). If so, you have to name the newly created gallery (Fig. 12).

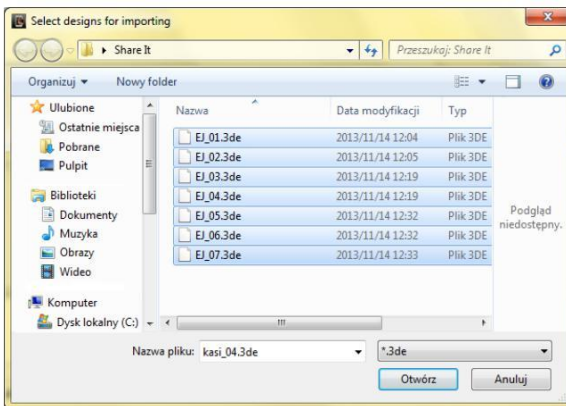


Fig. 9 – window: importing design visualization files (3DE)



Fig. 10 – creating a new gallery



Fig. 11 – naming a gallery



Fig. 12 – import progress bar

While 3DE files are being imported, a progress bar appears below the list of galleries (Fig. 12)

## 7. Manage galleries

The availability of design gallery management functions depends on the type of the account you have. Holders of BASIC accounts have at their disposal one gallery (Fig. 13) and all they can do is change its name. If you are a PRO account holder, however, you can also create, as well as delete several galleries (Fig. 14).

To add a gallery, click **'Add'** and give the new gallery a name (Fig. 15). To delete a gallery, select it by left-clicking it, and click **'Delete'**'; afterward, confirm the operation (Fig. 16).



Fig. 13 – the BASIC account



Fig. 14 – the PRO account



Fig. 15 – adding a new gallery

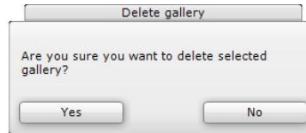


Fig. 16 – confirming the deletion of a gallery

To change the name of a gallery, right-click the desired item, type the new name in the editing field, and confirm the operation by pressing the **[Enter]** key. The name will be changed. The procedure is presented in the illustration below (Fig. 17).



Fig. 17 - changing the name of a gallery


## 8. Manage designs



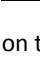
Designs are displayed in the main window of the app as interactive visualizations, which can be rotated, as well as zoomed in and out. A design will be shown after the **'Open .3de file'** option and either the **'Display'** or **'Publish'** function has been used. To display the visualization of another design from a given gallery, left double-click it.

In the lower part of the app window, you can see lists of design thumbnails:



- **'Designs used in the gallery'** - a list of designs in the currently selected gallery - it appears after double-clicking the gallery (the upper list) (Fig. 18);
- **'All designs'** - a list of all designs published on the server (the lower list); the names of designs contained in the currently open gallery appear in bold on this list (Fig. 18).

In the lower right corners of design thumbnails the following symbols may appear:

-  - **'startup design'** - indicates the design that is displayed when the gallery opens (available only for PRO account holders);

-  - **'displayed'** – indicates the design currently presented in the visualization window;
-  - **'association added'** – a design which has been associated with another design (you can find more information about associations in point 10 on page 16).
-  - **'used in the gallery'** – a design belonging to the currently open gallery (it displays on thumbnails in the bottom list: **'All design'**).

You can decide which view of a given scene will be used as its thumbnail - more information can be found in point 11 on page 17.

Design lists can be collapsed and expanded again with the  and  arrows, available near the left edge of the screen.

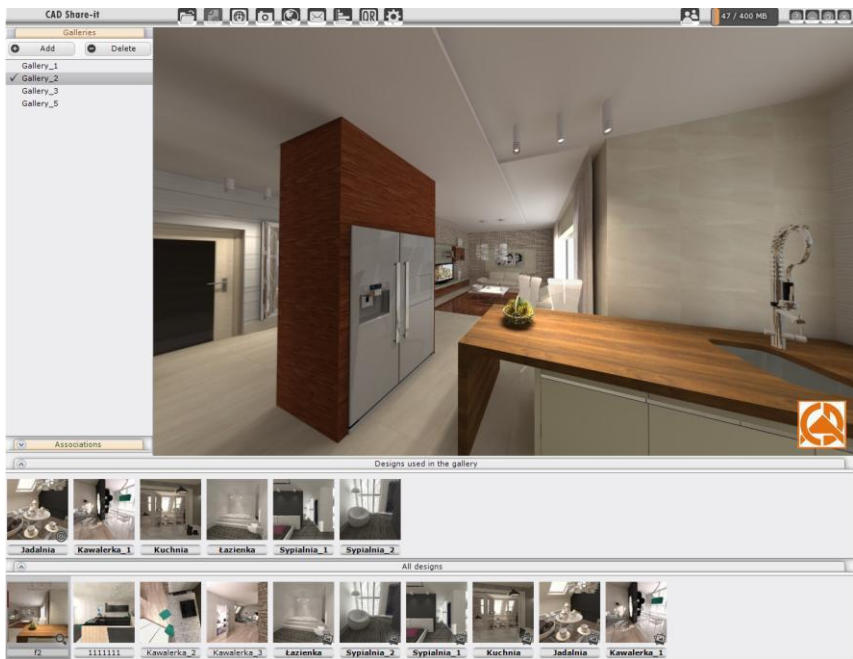


Fig. 18 – design lists in the PRO version - from the current gallery (top row) and all published on the server (bottom row)

## 8.1. Publish designs

3DE files can be published right after opening, by choosing the **'Publish'** option in the **'What do you want to do?'** window. If you choose this option, you will be asked to give the design a name, and, after you have confirmed it, you will see an orange upload progress bar (Fig. 19).

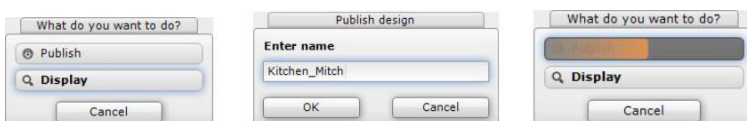
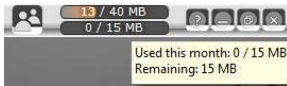


Fig. 19 – choosing the 'Publish' option, naming the design to be published, the orange upload progress bar 12

Information about the status of monthly quotas:



- **the BASIC account:** the top bar shows used up disk space, and the bottom bar the status of the monthly quota on the size of designs uploaded to the server in the current month;



- **the PRO account:** there is only one bar, showing up used up disk space, since there is no limit on how much can be uploaded to the server in a given month.



- **'Upload design to server'** – this option publishes a design which has been displayed. It becomes active when you choose the **'Display'** option after loading a 3DE file by means of the **'Open .3de file'** function. Having selected the **'Upload design...'** icon, you will be asked to give it a name (Fig. 20).

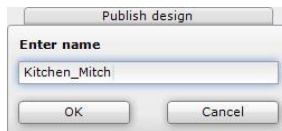


Fig. 20 – naming a design to be published

## 8.2. Manage designs on the server

The designs stored on the server can be: deleted (individually or a few at once), displayed and sent by e-mail. You can also rename them and generate QR codes for them, in PNG format.

These options can be accessed by right-clicking a design thumbnail in either of the lists: **'Designs used in the gallery'** or **'All designs'**. For designs in a gallery, two options are available: **'Remove from gallery'** and **'Set as startup'**. When a design from the main list is selected, two other functions become available: **'Add to gallery'** and **'View in Browser'**.

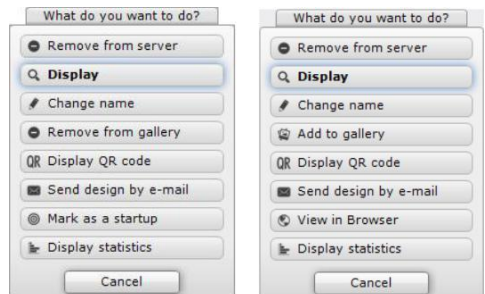


Fig. 21 – context menu – different variants

### 8.2.1. Generate QR codes


Choosing the **'Display QR code'** option from a context menu, or the  **'Display QR code for this design'** icon from the top toolbar displays a unique code linking to a visualization placed on the server. The code can be saved in PNG format and sent to a client. Below the code, a URL linking to the visualization appears, which can be copied and likewise sent to your clients (Fig. 22). To copy the link, simply left-click it.



Fig. 22 – QR code and URL linking to a design

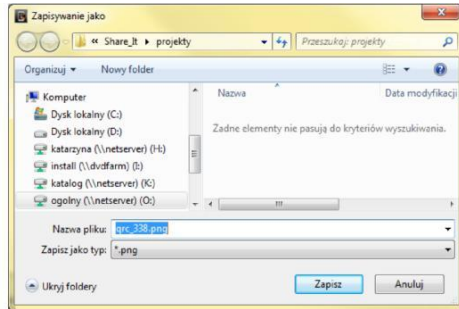


Fig. 23 – saving a QR code on the hard drive

### 8.2.2. Send designs by e-mail

To share a design by e-mail, simply choose the **'Send design by e-mail'** option, fill out the **'Send message'** window with the required information (Fig. 24) and confirm the by clicking **'Send'**. You can also see the message preview or change e-mail language (Fig. 25).

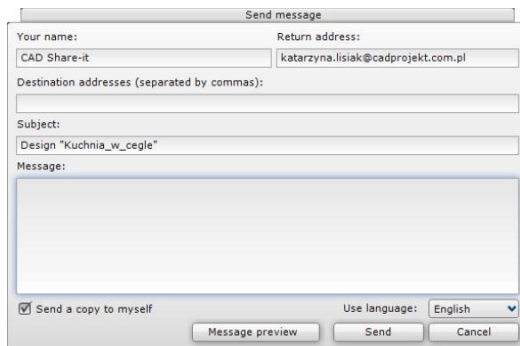


Fig. 24 – sending a design by e-mail

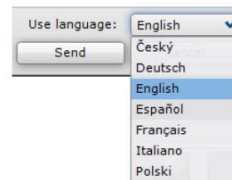


Fig. 25 – choosing language for e-mail

An example of an e-mail sent with CAD Share-it is presented below.



Click on the picture to view the design in the browser



If you have a mobile device with Android or iOS, scan the QR code below using a code reader built into our mobile application **CAD Share-it**, or use any application for scanning QR codes



CAD Share-it Android



CAD Share-it iOS



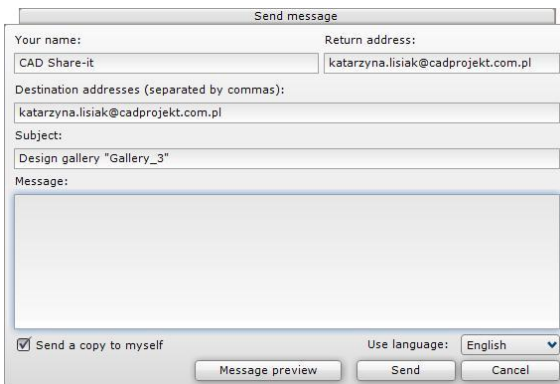
Fig. 26 – an example of an e-mail sent with CAD Share-It

## 9. Send a gallery by e-mail



- **'Send active gallery by e-mail'** - sends all designs contained in a selected gallery by e-mail. To send an entire gallery by e-mail, select it from the list in the left-hand side of the window and click the icon. Afterward, fill out the window that will pop up with the necessary information. (Fig. 27).




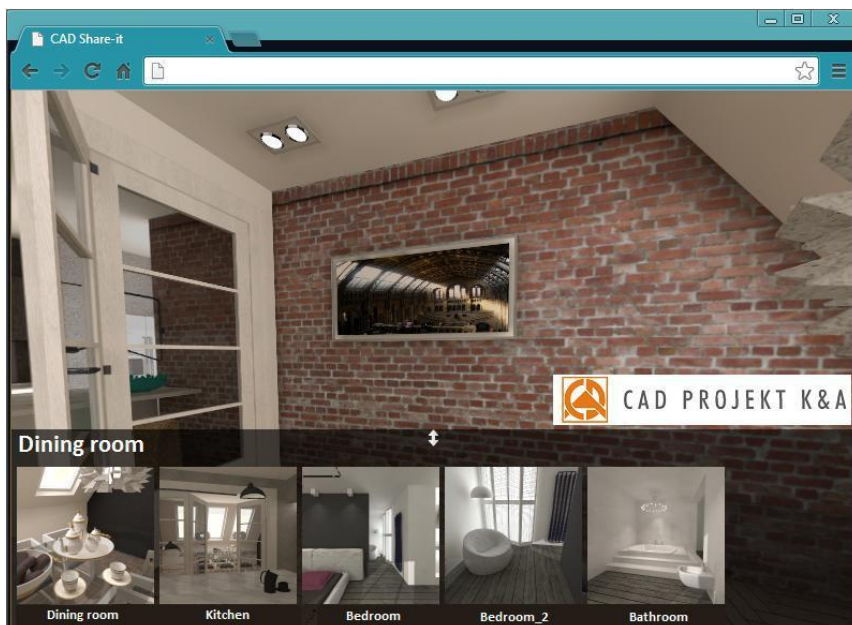


**Fig. 27 – sending a gallery by e-mail**

*Note! To send a link to the online design in a text message, please follow one of below procedures:*

- send an e-mail from CAD Share-it to your own e-mail address and open it on your smartphone, then copy the link and resend it to your clients - in text message;
- scan the QR code with some external program allowing to send a resulting link via text message (e.g. Barcode Scanner for Android).

After receiving the e-mail, the recipient can display the designs in an internet browser by clicking a design thumbnail or by scanning the QR code. To see all designs from a given gallery, use the arrows , which are situated in the middle of the screen, or hold down a finger/the left mouse button anywhere.



**Fig. 28 – a gallery displayed in an internet browser**



## 10. Manage associations

Associations are transitions between designs in a gallery which enable, among other things, moving to another room or watching a scene from a different point of view while moving through a visualization of a design. To establish an association, drag the thumbnail of a design to be associated into the display area of the currently open design (Fig. 29).

You can do this by using the drag-and-drop gesture: left-click the desired thumbnail, holding down the mouse button move the cursor to the location where you want to place the association, and release the button. In the selected place, an arrow indicating the newly-established association will appear (Fig. 30). When you place your mouse cursor over the arrow, an label with associated design name will be displayed (Fig. 31).



Fig. 29 – creating an association

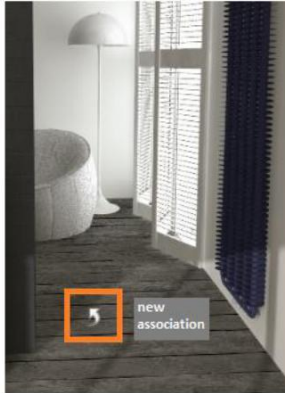


Fig. 30 – new association



Fig. 31 – a label with design name visible after pointing with the cursor

At this moment, two options become available - you can go to the associated design or delete the association (Fig. 32, 33 and 34).



Fig. 32 – options available after clicking the arrow



Fig. 33 – going to an associated design

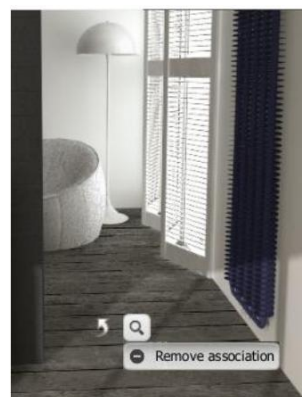


Fig. 34 – deleting an association



The illustration on the following page shows an association visible in a design displayed online; in the left half of the screen (Fig. 35). For greater visibility, the arrow and caption pulsate. After left-clicking the association, you are transported to another room; here: from a living room to a bedroom.

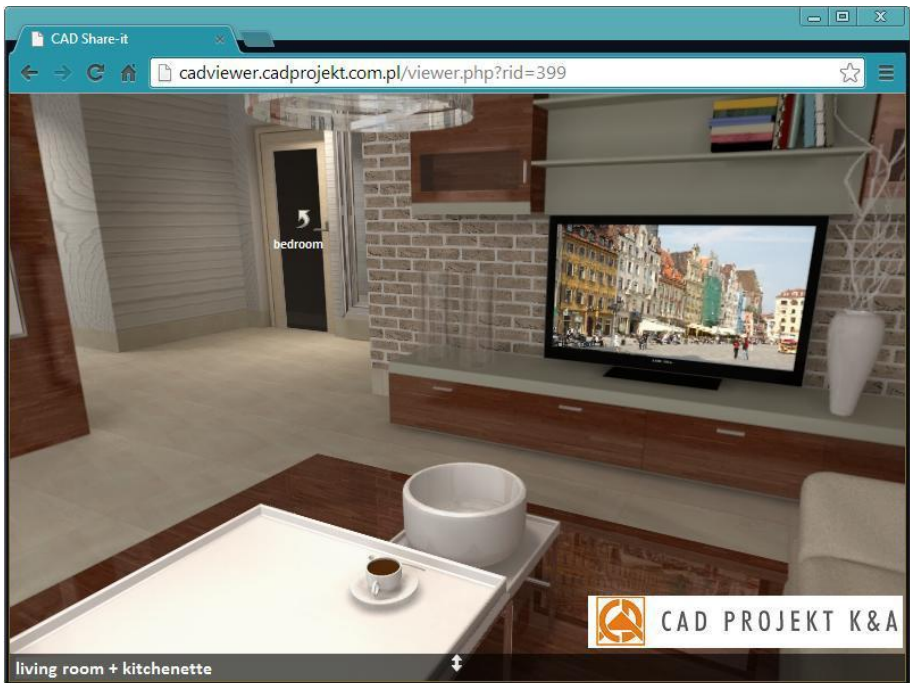


Fig. 35 – design visualization displayed in a browser, with an association to a design called 'bedroom'

In the CAD Share-it app, associations between designs in a gallery appear below the list of galleries in the left half of the window. An example list of associations is presented in the illustration to the right (Fig. 36).

The list of associations can be expanded or collapsed by using an arrow situated next to the name of the panel:




Fig. 36 - an example list of associations between designs of four rooms

## 11. Display statistics

Users of the CAD Share-it app can monitor display statistics - for an entire account, for individual galleries and for particular designs. An instance of displaying, otherwise known as downloading, takes place each time a design or a gallery is opened in an internet browser, be it by e-mail, a link or a QR code. The limit on displays for a BASIC account is 50 per month, and for a PRO account – 500. Displaying a gallery is equal to displaying all designs it contains (e.g. displaying a gallery containing four designs will decrease the number of downloads available in a given month by four).

Statistics can be monitored:

- for an entire account - in the account choice window (Fig. 37);
- for a gallery - by clicking the  'Show display statistics' icon in the top toolbar after selecting a gallery from the list in the left half of the window (Fig. 38);
- for a design - in the **'What do you want to do?'** menu, which appears when you right-click a selected design (Fig. 39).

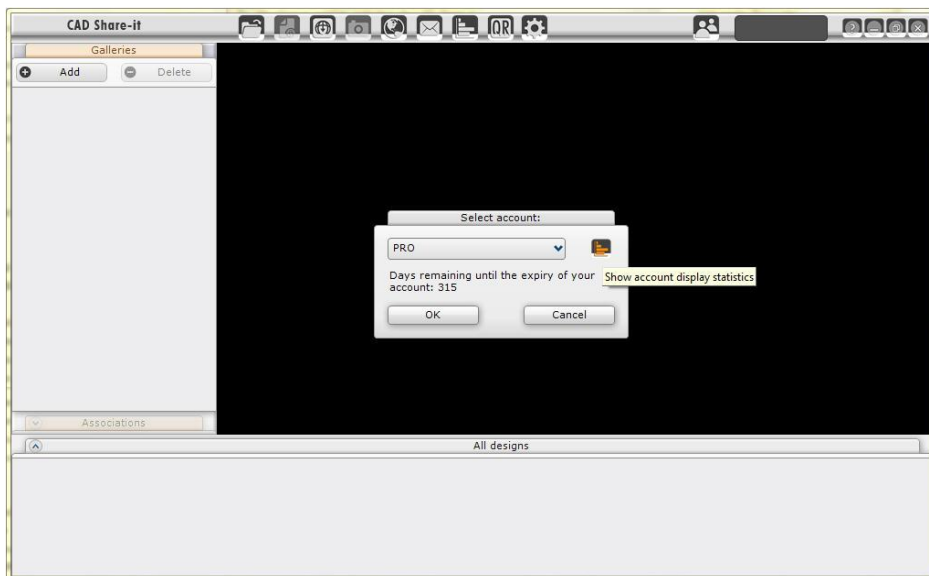


Fig. 37 – the 'Show statistics...' option for an account available at CAD Share-it app startup



Fig. 38 – the 'Show statistics...' option for a selected gallery

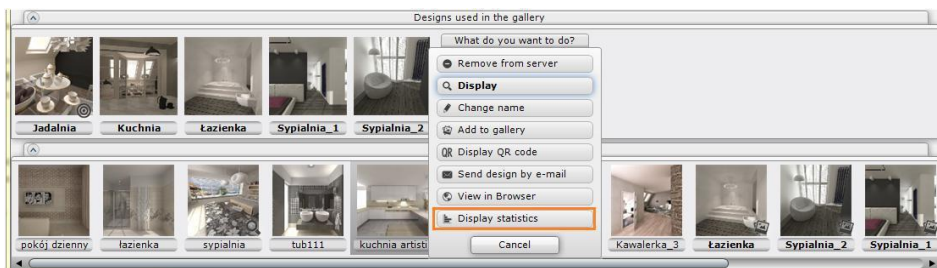


Fig. 39 – the 'Display statistics' option for a selected design

The illustrations below show: example display statistics for a PRO account (Fig. 40), statistics for a gallery (Fig. 41) and a chart for an individual design (Fig. 42).

The orange markers indicate the number of times a given object was displayed on a given day (e.g. Figure 40 shows that on 18<sup>th</sup> December the object was downloaded 25 times - the value on the left axis). The red line shows the number of downloads in a given month (150 displays - marked on the right axis). At the bottom of the window, the total number of downloads since the account was opened, the gallery was created or the design was published is shown

(‘Total number of displays’).

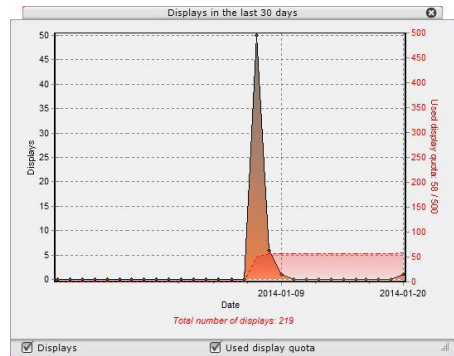


Fig. 40 – display statistics for an entire account

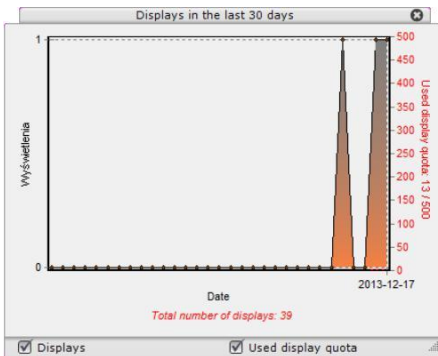


Fig. 41 – display statistics for a selected gallery

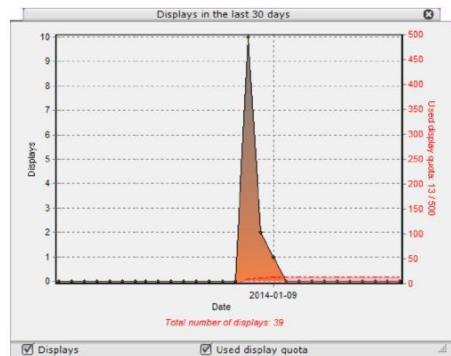



Fig. 42 – display statistics for a selected design

To change the size and shape of the ‘Displays...’ window, left-click the  symbol in the lower left corner of the window and, holding down the button, move the mouse. It can be useful if downloads took place in quick succession and the window is too small to show the dates (Fig. 43).

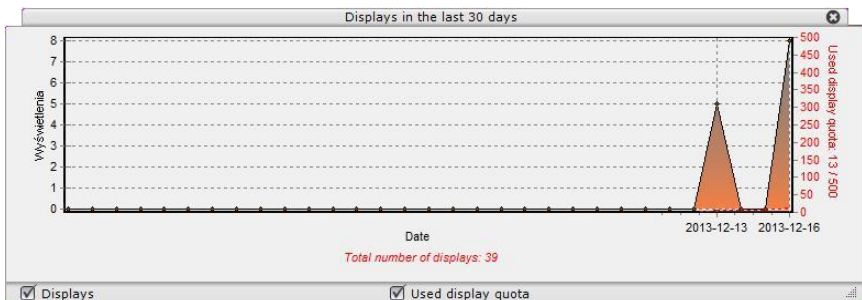


Fig. 43 – an expanded window – both display dates visible

You can switch off the following elements of the diagram: **'Displays'** and **'Used display quota'**. Below, you can see account statistics with the number of downloads switched off – all that can be seen is the status of the download quota (about 100 downloads) (Fig. 44).

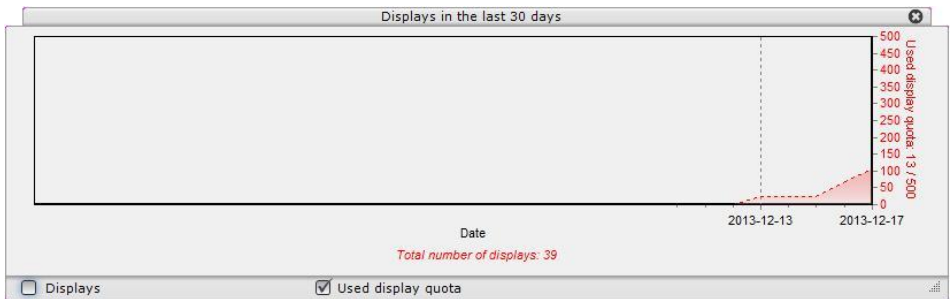



Fig. 44 – a chart with the number of downloads hidden - marker of download quota status visible

## 12. Set design preview

You can set the most attractive views from your visualizations as their thumbnails. These will be used in design lists and in e-mails.

To do so, choose the  **'Set current design preview'** icon, and set the desired view with the mouse. The preview area is outlined by an orange square frame in the center of the visualization window (Fig. 45).

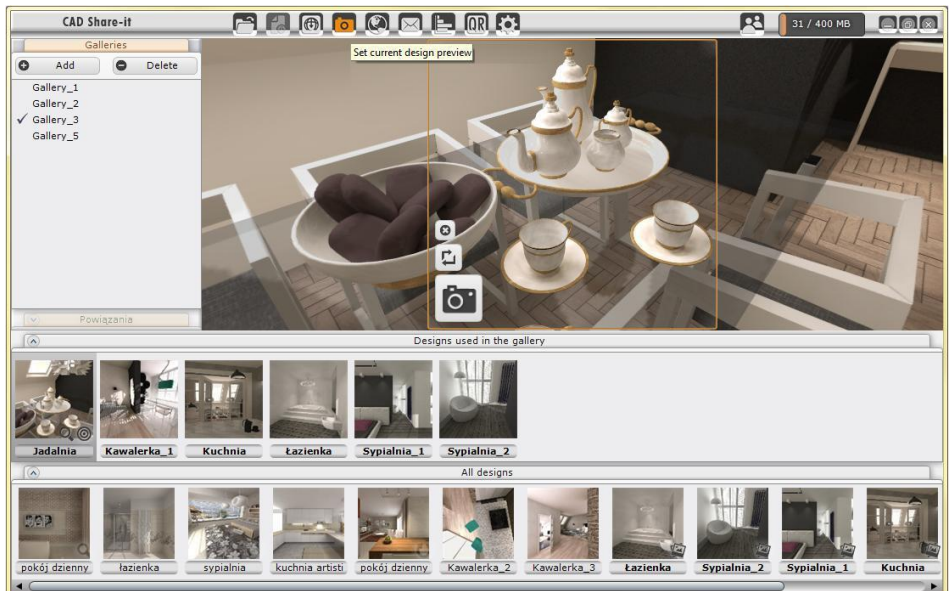


Fig. 45 – setting design preview for a gallery



While setting a design preview, three options are available: **'Cancel'**, **'Restore default preview'** and **'Set preview'**, which can be accessed by clicking the buttons shown below (Fig. 46). Choosing the last of those options results in saving the selected view as the design thumbnail - at that moment, the **'Loading preview'** progress bar appears and design lists are updated (Fig. 47).



Fig. 46 - options available when setting the preview

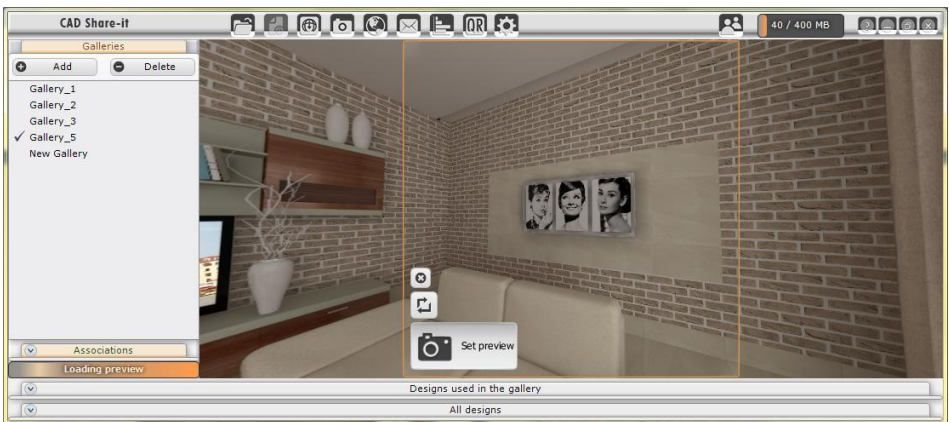


Fig. 47 – saving a new preview for a design

### 13. Manage accounts



- **'Change account'** - enables switching between BASIC and PRO accounts and displaying download statistics for accounts (Fig. 48).



- **'Account settings'** - this option is only available for PRO accounts and it allows adding a logo file to design visualizations - for an entire account or for a given design or gallery (Fig. 49).

For a user logo (for an account), you can add a link to a website that will open when the logo is clicked - in the **'After clicking the logo go to:'** field.

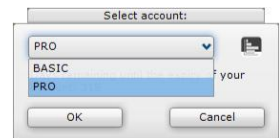


Fig. 48 – account choice window




Fig. 49 – the logo set for an account



## 14. Other functions

### 14.1. Gallery or design preview in a browser

To check the final look of a presentation you can use the option of previewing it in a browser. This option does not use up your monthly publication quota.

To launch a gallery preview, choose the  **'Preview in Browser'** icon from the top toolbar. And to view a single design, select it from the list at the bottom of the app window, right-click it to expand a context menu, and choose the **'View in Browser'** function (Fig. 50).

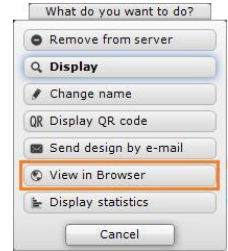


Fig. 50 – context menu with the function of previewing a design in a browser

When a design is displayed in an internet browser for the first time, you might be asked to install the Unity Web Player software (Fig. 51). If that is the case, install the Unity Web Player software, following the on-screen instructions.

### 14.2. Displaying information about limits

As already mentioned at the beginning of this manual, users of the CAD Share-it app with BASIC accounts are bound by three limitations:

- a monthly upload limit;
- a monthly download limit (200 downloads);
- a non exceedable limit disk space (100 MB).

Users of the PRO version are limited in only two ways, by:

- a monthly download limit (2000 downloads);
- a non exceedable disk space limit (1 GB).

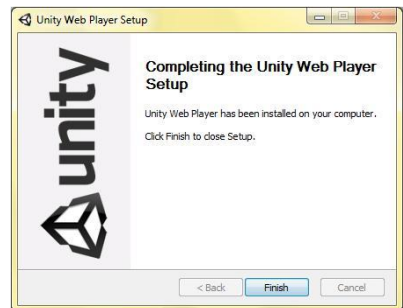


Fig. 51 – installing Unity Web Player

Once a limit has been exceeded, you will be informed about it with a message (Figures 52 and 53). If you have used up your upload or download quota, you will have to wait until the beginning of the next month – your monthly upload/download allowance is then renewed and you can resume publishing designs, and your customers will once again be able to view them. However, if you use up all of your disk space, you will have to delete some previously published designs in order to be able to place further designs on the server.

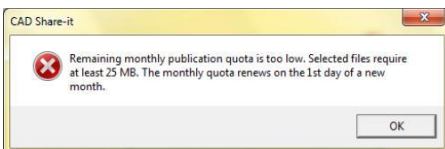


Fig. 52 – exceeding the monthly upload quota makes it impossible to publish a design

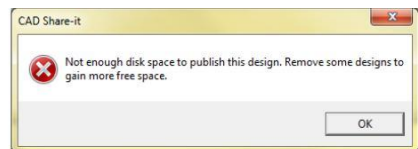


Fig. 53 – message informing that the overall disk space for an account has been used up

### 14.3. Access to manual


In order to open the user's manual, click the  'Open Help' icon, in the right upper corner of the screen. As a result, a manual in PDF will open (Fig. 54). The manual is also available at our website: <https://www.en.cadprojekt.com.pl/program-manuals/>.



Fig. 54 – user's manual



- '**Minimize**' – hides the app window; it will disappear from the desktop and it will be visible only as a button on the taskbar.



- '**Maximize**' - maximizes the window to fill the whole screen or restores it down to its previous size.



- '**Close**' - exits the CAD Share-it app.

*Note! Because CAD Share-it is very simple to use, Technical Support considers only its cooperation with our software for interior design.*

Tel. 61 642 90 82 or 61 662 38 83



#### TECHNICAL SUPPORT

##### Any questions or concerns?

Contact our technical support

e-mail: [pomoc@cadprojekt.com.pl](mailto:pomoc@cadprojekt.com.pl)

or look for information in the 'Knowledge center'

at our website [www.cadprojekt.com.pl](http://www.cadprojekt.com.pl)



## CAD PROJEKT K&A

CAD Projekt K&A Sp.J. Dąbrowski, Sterczała, Sławek  
ul. Rubież 46 | 61-612 Poznań  
tel. +48 61 662 38 83 | fax +48 61 642 94 55,  
biuro@cadprojekt.com.pl | [www.cadprojekt.com.pl](http://www.cadprojekt.com.pl)



IntelliCAD and the IntelliCAD logo are registered trademarks of The IntelliCAD Technology Consortium in the United States and other countries.